



xeno 
GREAT VALUE HD CCTV



PRODUCT OVERVIEW

EFFECTIVE CCTV, HONESTLY PRICED.

Xeno's range of CCTV products from Norbain are designed to offer simplicity at every level. The range reflects Xeno's core philosophy of providing cost-sensitive, quality products that are ideal for installations where complexity isn't required.

CONTENTS

Analogue to IP	3
Junction Boxes & Spacers	3
Nitro HD Analogue Range	4
Nitro HDA DVR Range	8
XMS Central - Nitro DVR Client Software	10
Nitro HD Monitor Range	11
Test Monitor	12
Analogue Accessory Range	13

**2 YEAR
ADVANCE
REPLACEMENT**
for any Xeno
product

Any Xeno product purchased from 2nd January 2015, that develops a fault* within 24 months of invoice, will be replaced# if it is found to have a manufacturing or production defect.

Product warranty comes into effect from shipment date as determined by serial number & purchase order number.

*The fault needs to be confirmed via Norbain Technical Support. Tel: 0844 335 3934.

After 21 days from shipment date, Norbain reserve the right to use a refurbished or service product for the remainder of the advance warranty period.

This offer is subject to proper installation and use in accordance with manufacturer's terms and conditions.



ANALOGUE TO IP

XIPOC

The Xeno IP Over Coax (XIPOC) transmission pair enables the installer to connect an RJ45 PoE network switch to standard RG59 coax cable, allowing both power and Full HD video to be transmitted over an existing coax infrastructure.

The maximum transmission distance for RG59 solid copper core is 300m. It consists of one transmitter side (Remote Camera Unit) and one receiver side (Local Unit).

These units are ideal for allowing a simple cost effective solution using existing coax infrastructure to convert to a Full HD IP system.

- Ethernet and PoE over coax
- Up to 300m of RG59 (static IP cameras)*
- Plug and Play
- In-built lightning protection

*Will not power PTZ cameras.



XIPOC (0743930)

JUNCTION BOXES & SPACERS

XWPBB

External IP65 junction boxes for the following cameras:

- XEDHDA28V12Q-1080
- XEDHDA28V12Q-1M3
- XEDHDA28V12QW-1080
- XEDHDA28V12QW-1M3
- XBLHDA28V12Q-1080
- XBLHDA28V12Q-1M3



XWPBB-G (0806030)

XWPBB-W (0806020)

XEDSPACER

Internal spacers for the following cameras:

- XEDHDA28V12Q-1080
- XEDHDA28V12Q-1M3
- XEDHDA28V12QW-1080
- XEDHDA28V12QW-1M3



XEDSPACER-GREY
(0657050)

XEDSPACER-WHITE
(0657060)

NITRO HD ANALOGUE RANGE



Cameras



XEDHDA28V12Q-1080
XEDHDA28V12QW-1080
XEDHDA28V12AQ-1M3
XEDHDA28V12AQW-1M3

For compatible junction boxes
and spacers, please see page 3.



XEDHDA36A-1M3
XEDHDA36AW-1M3



XDCHDA28V12Q-1080



XVDHDA28V12Q-1080
XWB-VD (Wall Bracket)



XBLHDA28V12Q-1080
XBCHDA28V12Q-1M3

For compatible junction box, please see page 3.



XLCHDA6V22A-1080

NITRO HD ANALOGUE RANGE



Cameras

Eyeball domes

Part code	Strats no.	Description	Lens	Resolution	COAX Menu Control	IR range	Operation	Power	IP rating	XWPBB*
XEDHDA28V12Q-1080	0767650	Quad Full HD eyeball varifocal grey	2.8-12mm	1080p/960H	Yes	20m	TDN	12VDC	IP66	Yes
XEDHDA28V12QW-1080	0767660	Quad Full HD eyeball varifocal white	2.8-12mm	1080p/960H	Yes	20m	TDN	12VDC	IP66	Yes
XEDHDA28V12QA-1M3	0749310	1.3MP eyeball varifocal grey	2.8-12mm	960p/960H	Yes	20m	TDN	12VDC	IP66	Yes
XEDHDA28V12AQW-1M3	0749320	1.3MP eyeball varifocal white	2.8-12mm	960p/960H	Yes	20m	TDN	12VDC	IP66	Yes
XEDSPACER-GREY	0657050	Spacer for grey varifocal eyeball	N/A							
XEDSPACER-WHITE	0657060	Spacer for white varifocal eyeball	N/A							
XEDHDA36A-1M3	0749340	1.3MP eyeball fixed lens grey	3.6mm	960p/960H	Yes	15m	TDN	12VDC	IP66	–
XEDHDA36AW-1M3	0749330	1.3MP eyeball fixed lens white	3.6mm	960p/960H	Yes	15m	TDN	12VDC	IP66	–

Internal dome

Part code	Strats no.	Description	Lens	Resolution	COAX Menu Control	IR range	Operation	Power	IP rating	XWPBB*
XDCHDA28V12Q-1080	0767620	Quad Full HD plastic internal dome	2.8-12mm	1080p/960H	Yes	20m	TDN	12VDC	Internal	–

Vandal dome

Part code	Strats no.	Description	Lens	Resolution	COAX Menu Control	IR range	Operation	Power	IP rating	XWPBB*
XVDHDA28V12Q-1080	0767670	Quad Full HD external vandal dome	2.8-12mm	1080p/960H	Yes	20m	TDN	12VDC	IP66/IK10	–
XWB-VD	0763990	Wall bracket for XVDHDA28V12A-1080	N/A							

Bullet cameras

Part code	Strats no.	Description	Lens	Resolution	COAX Menu Control	IR range	Operation	Power	IP rating	XWPBB*
XBLHDA28V12Q-1080	0194440	Quad Full HD bullet 40m IR range	2.8-12mm	1080p/960H	Yes	30m	TDN	12VDC	IP66	Yes
XBCHDA28V12Q-1M3	0194430	1.3MP bullet 40m IR range	2.8-12mm	960p/960H	Yes	30m	TDN	12VDC	IP66	Yes
XLCHDA6V22A-1080	0749380	Full HD bullet dual IR 45M	6-22mm	1080p/960H	Yes	45m	TDN	12VDC	IP66	–

*XWPBB: IP65 junction box (Page 3).

NITRO HD ANALOGUE RANGE



IR Speed Dome

- 1080p TVI Format
- 18x zoom lens
- Over 100m IR range
- Up the coax TVI protocol (RS485)
- Software ID addressing (RS485)
- IP66 housing
- 24VAC operation
- Wall bracket included



XPTZ18HDAIRW



XPTZ-ADP
Ceiling / tower bracket



XPTZ-CMA
Corner mount adaptor



XPTZ-PMA
Pole mount adaptor

IR speed dome

Part code	Strats No.	Description	Lens size	IR illumination	Resolution	Protocols	Alarm	No. of presets	No. of Tours	Wiper	Voltage	Wall bracket
XPTZ18HDAIRW	0780440	18x IR speed dome	18:1	100m	1080p	TVI UTC Pelco D / P	4 in 1 out	220	3	Yes	24VAC	Included

Recommended power supply

Part code	Strats No.	Description
VPSU2431EXTe	0785090	24VAC, 3 Amp, IP68 power supply

Tower mounting requires the following parts

Part code	Strats No.	Description
VPP-TM	0470440	Tower mount bracket to be used with XPTZ-ADP
XPTZ-ADP	0742860	Bracket adaptor, allows ceiling connection or connection to tower mount and corner mount adaptors

Corner mounting requires the following parts

Part code	Strats No.	Description
XPTZ-CMA	0183550	Corner mount adaptor

Pole mounting requires the following parts

Part code	Strats No.	Description
XPTZ-PMA	0182490	Pole mount adaptor

NITRO HD ANALOGUE RANGE



6MP 180° Panoramic Camera

- 180° panoramic coverage
- Starlight technology
- 6MP AHD (3 x 2MP sensors)
- 4 outputs (3 individual outputs plus stitched panoramic)
- Up the coax menu control and image stitching from Nitro DVR
- 3 alarm outputs
- WDR



XPANHDA180A-6MP

6MP 180° Panoramic Camera

Part code	Strats No.	Description	Lens size	Resolution	Protocols	Alarm	Voltage	Mounting
XPANHDA180A-6MP	0172180	6MP 180° Panoramic Camera	3x 2.8mm	6MP	AHD, PELCO D	3 outputs triggered by motion detection	12VDC	3-axis

Recommended power supply

Part code	Strats No.	Description
VPSU1221EXTe	0785220	12VDC 2 Amp IP66 power supply

NITRO HDA DVR RANGE



- Full HD 1080p recording
- CVI, AHD, TVI and 960H record formats
- 300m range on RG59 coax

- HDMI monitor output
- CMS software supplied
- iOS and Android apps



XHDAR04

4 channel No DVD drive.
Up to 6TB internal storage



XHDART

16 channel No DVD, 2 HDD.
Up to 12TB internal storage



XHDART/DVD

8/16 channel with DVD. Up to 6TB internal storage

Nitro HDA DVR range

Part code	Strats no	Channels	HDD size	Recording formats	Record rate (per Channel)	Display rate	HMDI	VGA	Alarms	DVD	PTZ control	Software
XHDAR04-1TB	0720060	4	1TB	CVI/AHD/TVI/960H	12ips @ 1080p	Realtime	Yes	-	4 in / 1 out	-	Yes	Yes
XHDAR04-2TB	0720080	4	2TB	CVI/AHD/TVI/960H	12ips @ 1080p	Realtime	Yes	-	4 in / 1 out	-	Yes	Yes
XHDART08-2TB	0115430	8	2TB	CVI/AHD/TVI/960H	25ips @ 1080p, 12ips @ 3MP	Realtime	Yes	-	4 in / 1 out	-	Yes	Yes
XHDART08-4TB	0115440	8	4TB	CVI/AHD/TVI/960H	25ips @ 1080p, 12ips @ 3MP	Realtime	Yes	-	4 in / 1 out	-	Yes	Yes
XHDART08-6TB	0115450	8	6TB	CVI/AHD/TVI/960H	25ips @ 1080p, 12ips @ 3MP	Realtime	Yes	-	4 in / 1 out	-	Yes	Yes
XHDART08DVD-2TB	0115460	8	2TB	CVI/AHD/TVI/960H	25ips @ 1080p, 12ips @ 3MP	Realtime	Yes	Yes	4 in / 1 out	Yes	Yes	Yes
XHDART08DVD-4TB	0115470	8	4TB	CVI/AHD/TVI/960H	25ips @ 1080p, 12ips @ 3MP	Realtime	Yes	Yes	4 in / 1 out	Yes	Yes	Yes
XHDART08DVD-6TB	0115480	8	6TB	CVI/AHD/TVI/960H	25ips @ 1080p, 12ips @ 3MP	Realtime	Yes	Yes	4 in / 1 out	Yes	Yes	Yes
XHDART16-2TB	0115490	16	2TB	CVI/AHD/TVI/960H	25ips @ 1080p, 12ips @ 3MP	Realtime	Yes	Yes	4 in / 1 out	-	Yes	Yes
XHDART16-4TB	0115640	16	4TB	CVI/AHD/TVI/960H	25ips @ 1080p, 12ips @ 3MP	Realtime	Yes	Yes	4 in / 1 out	-	Yes	Yes
XHDART16-6TB	0115650	16	6TB	CVI/AHD/TVI/960H	25ips @ 1080p, 12ips @ 3MP	Realtime	Yes	Yes	4 in / 1 out	-	Yes	Yes
XHDART16-8TB	0115660	16	8TB	CVI/AHD/TVI/960H	25ips @ 1080p, 12ips @ 3MP	Realtime	Yes	Yes	4 in / 1 out	-	Yes	Yes
XHDART16DVD-2TB	0115670	16	2TB	CVI/AHD/TVI/960H	25ips @ 1080p, 12ips @ 3MP	Realtime	Yes	Yes	4 in / 1 out	Yes	Yes	Yes
XHDART16DVD-4TB	0115680	16	4TB	CVI/AHD/TVI/960H	25ips @ 1080p, 12ips @ 3MP	Realtime	Yes	Yes	4 in / 1 out	Yes	Yes	Yes
XHDART16DVD-6TB	0115690	16	6TB	CVI/AHD/TVI/960H	25ips @ 1080p, 12ips @ 3MP	Realtime	Yes	Yes	4 in / 1 out	Yes	Yes	Yes

NITRO HDA 32 CHANNEL DVR RANGE



- Full HD 1080P recording up to 400ips
- CVI, AHD, TVI, and 960H recording formats
- 300m range on RG59 coax
- HDMI and VGA Main monitor
- CVBS Spot monitor
- Alarms 16 in / 2 out
- PTZ – RS485 and HDA up the coax
- iOS and Android Apps
- XMS Central software



XHDAR32

Nitro HDA 32 channel DVR range

Part code	Strats no	Channels	HDD size	Recording formats	Record rate (per Channel)	Display rate	HDMI	VGA	Alarms	PTZ control	Software
XHDAR32-4TB	0269260	32	4TB	CVI/AHD/TVI/CVBS	400fps @ 1080p, 800fps @ 720P/960H	Real-time	Yes	Yes	16 in / 2 out	Yes	Yes
XHDAR32-6TB	0269270	32	6TB	CVI/AHD/TVI/CVBS	400fps @ 1080p, 800fps @ 720P/960H	Real-time	Yes	Yes	16 in / 2 out	Yes	Yes
XHDAR32-8TB	0269280	32	8TB	CVI/AHD/TVI/CVBS	400fps @ 1080p, 800fps @ 720P/960H	Real-time	Yes	Yes	16 in / 2 out	Yes	Yes
XHDAR32-12TB	0269290	32	12TB	CVI/AHD/TVI/CVBS	400fps @ 1080p, 800fps @ 720P/960H	Real-time	Yes	Yes	16 in / 2 out	Yes	Yes
XHDAR32-16TB	0270010	32	16TB	CVI/AHD/TVI/CVBS	400fps @ 1080p, 800fps @ 720P/960H	Real-time	Yes	Yes	16 in / 2 out	Yes	Yes
XHDAR32-24TB	0270020	32	24TB	CVI/AHD/TVI/CVBS	400fps @ 1080p, 800fps @ 720P/960H	Real-time	Yes	Yes	16 in / 2 out	Yes	Yes
XHDAR32-32TB	0270030	32	32TB	CVI/AHD/TVI/CVBS	400fps @ 1080p, 800fps @ 720P/960H	Real-time	Yes	Yes	16 in / 2 out	Yes	Yes

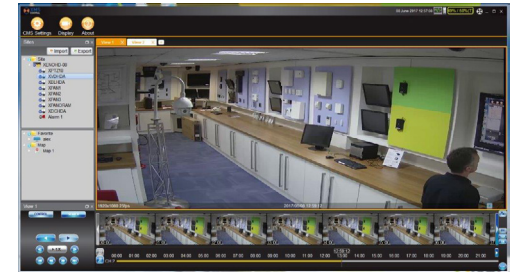
Rack mount shelf

Part code	Strats No.	Description
XHDAR32RK	0270480	Rackmount kit

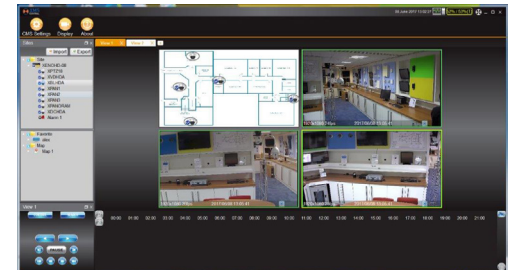
XMS CENTRAL – NITRO DVR CLIENT SOFTWARE



- Live and review
- PTZ control
- Customisable layouts
- Multiple monitor support
- Thumbnail Search
- Synchronised and unsynchronised play back
- E-Maps
- Pop up notifications



Thumbnail search



E-Map function

MONITOR RANGE



XLCD17LEDe
17" Monitor



XLCD19LEDe
19" Monitor



XLCD21WLEDe
21" Monitor

Part code	Strats no.	Screen size	Aspect ratio	Max. resolution	LED backlit	Inputs	Audio	Contrast ratio	Integral stand	VESA mount	Power
XLCD17LEDe	0710860	17"	4:3	1280x1024	Yes	HDMI/VGA/BNC/S-VHS	Yes	1000:1	Yes	Yes	230VAC
XLCD19LEDe	0710870	19"	4:3	1280x1024	Yes	HDMI/VGA/BNC/S-VHS	Yes	1000:1	Yes	Yes	230VAC
XLCD21WLEDe	0710880	21"	16:9	1920x1080	Yes	HDMI/VGA/BNC/S-VHS	Yes	1000:1	Yes	Yes	230VAC

TEST MONITOR

Diamond

The DIAMOND is the CCTV Engineers ultimate test tool!

Crammed with functions developed to make the job of installing, commissioning and fault finding of CCTV systems easier, this ergonomically designed touch screen monitor is the must have for any installation engineer.

As a basic test monitor the DIAMOND will accept virtually any CCTV camera format including IP, CVBS, TVI, AHD and CVI video.

Both RS485 and UTC protocols for TVI, AHD & CVI PTZ cameras can be tested directly from the monitor.

- Multi-format video input
- PTZ testing
- Long battery life
- UTP CAT5e tester
- Digital multi-meter
- Power output



ANALOGUE ACCESSORY RANGE

XBALUN COMPATIBLE

UTP baluns allow transmission of composite video (CVBS), AHD and TVI 2.0 across standard CAT5e cable. Either supplied in pairs or rack mount, these compact baluns are compatible with FSK (coax) based telemetry systems and are available with either direct connection or via pig tail.

- Range: CVBS = 300m, AHD = 200m and TVI 2.0 = 150m
- Built-in surge protection up to 6000V
- Supports coax telemetry (FSK)
- Single channel (supplied as matched pairs)
- Direct connection (XBALUN1) or pig tail (XBALUN 2)
- Compact size
- Simple installation



XBALUN1 (0498770)
UTP balun



XBALUN2 (0498780)
UTP balun

JACK

2.1mm to screw terminal connection for easy installation of 12VDC cameras.



JACK (0498900)

BNC Connectors



VBNC (0442930)
Single connector

VBNC100 (0442940)
Pack of 100 connectors

PSU

Operating from 98VAC – 260VAC, the Xeno metal cased PSUs provide 9 or 18 independent 12VDC outputs. Short circuit and overload protection is provided per output via PTC elements. Clear indication of operation can be seen via individual LED indicators per output.

XPSU1218
(0498760)
18 channel
12VDC PSU

XPSU1209
(0498750)
9 channel
12VDC PSU



- 18x 12VDC outputs / 9x 12VDC outputs
- Universal AC input 98-260VAC
- PTC protection – short circuit / overload / over voltage
- PTCs recover once fault removed
- LED indicator per output
- High efficiency (typical 80%)
- Metal cased
- Multiple cable output options



CONTACT US

Tel: 0541 352 952
Email: info@europesecurity.eu
Web: europesecurity.eu